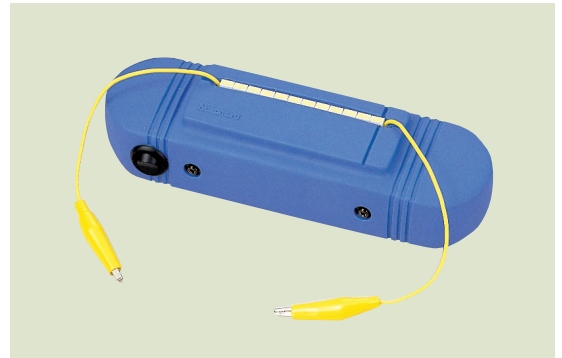


PIKOPIKO Galvanometer (Light-moving Galvanometer)

A05-7018 is used in a circuit with dry batteries and a miniature bulb in the same way as galvanometers. This device changes the flow of an electric current to a stream of light, allowing you to observe the direction of the current in model representation. It is a teaching aid for understanding the concept of electric current that is difficult to grasp.

Specification

- Indication method : Galvanoscopy by high-speed A/D conversion
- Input range : DC ± 0 to 1 A
- Size : 180 x 54 x 40 mm
- Weight : 290 g
- Batteries : Four AA dry batteries (provided)
Leads with a worm clip
- Function : Dry battery/miniature-bulb mode and electromagnetic induction mode (switched using a switch in the case)

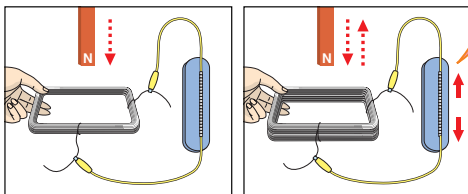


PIKOPIKO Galvanometer (light-moving galvanometer)

Examples of Experiments

For junior high school students

Experiment in the electromagnetic induction mode

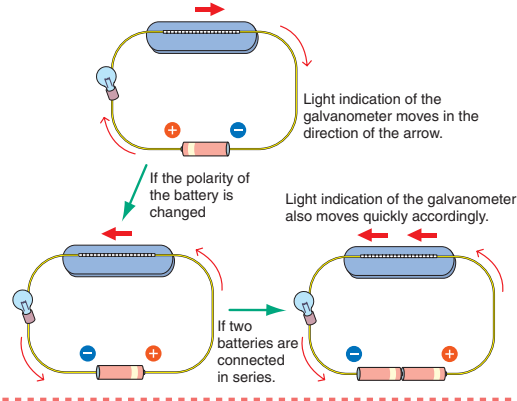


This experiment allows students to understand that a current flows and the direction of the current flow changes when a bar magnet is put into and taken out of the coil.

The direction of the light stream changes when a bar magnet is put into and taken out of a coil.

For elementary school children

Experiment in the dry battery/miniature-bulb mode



Light indication of the galvanometer moves in the direction of the arrow.

If the polarity of the battery is changed

Light indication of the galvanometer also moves quickly accordingly.

If two batteries are connected in series.